



Fossil Fuels

Fuel & Energy Safety

Fuel and Energy

General requirements

- Wherever in tourist accommodation energy sources are used for heating, cooling, boiling water, cooking or maintaining electrical systems, special safety precautions are required.
- Particular attention should be paid to facilities that use fossil energy sources, such as heating oil, natural gas, LPG, wood, coal and especially to all devices with open fires such as fireplaces or mushroom heaters.
- All devices and installations operated with fossil fuel should:
 - Be installed, operated and maintained according to the instructions and local legislation
 - Be annually serviced by a certified, competent provider/engineer
 - Only be installed and operated in a sufficiently ventilated room
 - **Where possible NOT be installed adjoined to any customer accommodation (not next to it, below or above),**
 - **Where possible NOT be installed inside any customer accommodation**
 - Be equipped with a flue that is connected securely to the appliance and terminates at a sufficient distance from any opening or inlet into the building (at least 1.5m away, and at least 1.5m above the highest point of the building) to prevent any danger to guests and staff from carbon monoxide that is produced during combustion.
- **Always seek advice from a competent engineer regarding any matters that are not fully understood in relation to fuel.**



Fuel and Energy

Gas Water Heaters – Commercial Boilers

- In most tourist accommodation there is one or more central boilers / water heaters that provide hot water for **all guest rooms or a group of guest rooms**.
- This type of boiler is known as a 'Commercial Boiler'.
- Mostly these devices are located away from any guest accommodation in their own separate room.
- This type of boiler may look similar to those in the pictures below.

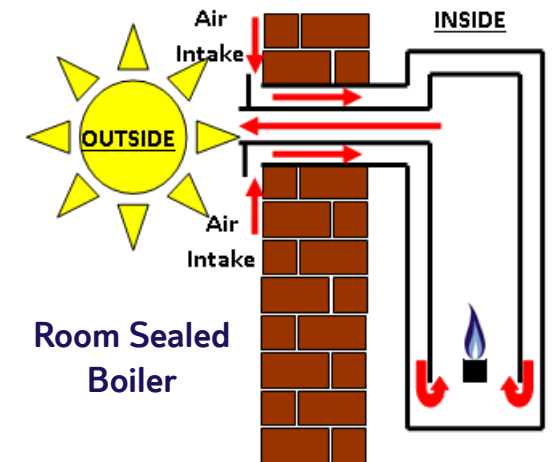
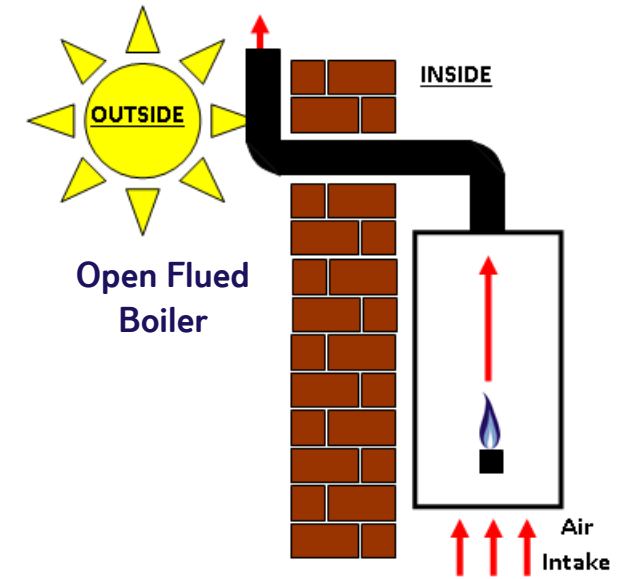
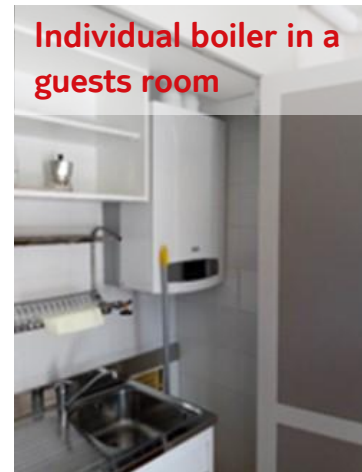


Fuel and Energy

Gas Water Heaters – Single (Individual)

What is meant by “single (individual) boiler/water heaters”?

- In some tourist accommodation there may be boilers or gas water heaters that serve one room only and are located directly inside the guest room.
- This type of boiler typically looks like the one in the picture below.
- There are two types of individual gas water heaters – ‘**Open Flued**’ and ‘**Room Sealed**’.
 - In room sealed systems the air needed for combustion is supplied from the outside.
 - Open flue systems draw the air for combustion from within the room or internal space in which they are installed.
- ‘**Open flued**’ individual gas water heaters pose a greater risk of carbon monoxide poisoning and therefore, it would be worth considering relocating the gas water heater to an outside wall of the accommodation or replacing the gas water heater with a solar or electric option.
- ‘**Open flued**’ individual gas water heaters are **not allowed** for guest rooms where TUI guests are accommodated.



Contact

For further information contact the Safety & Risk Accommodation Team

groupsafety-accommodationaudits@tui.com

