



Stairways

General Safety

Stairways – A Means of Escape

General information

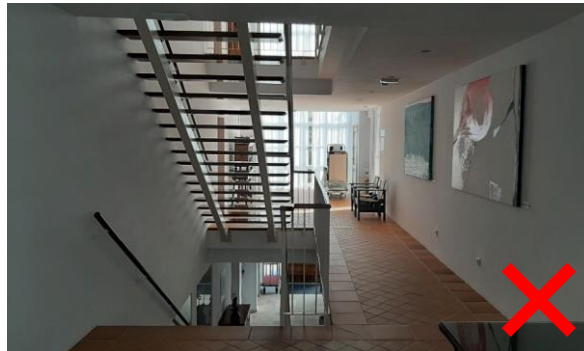
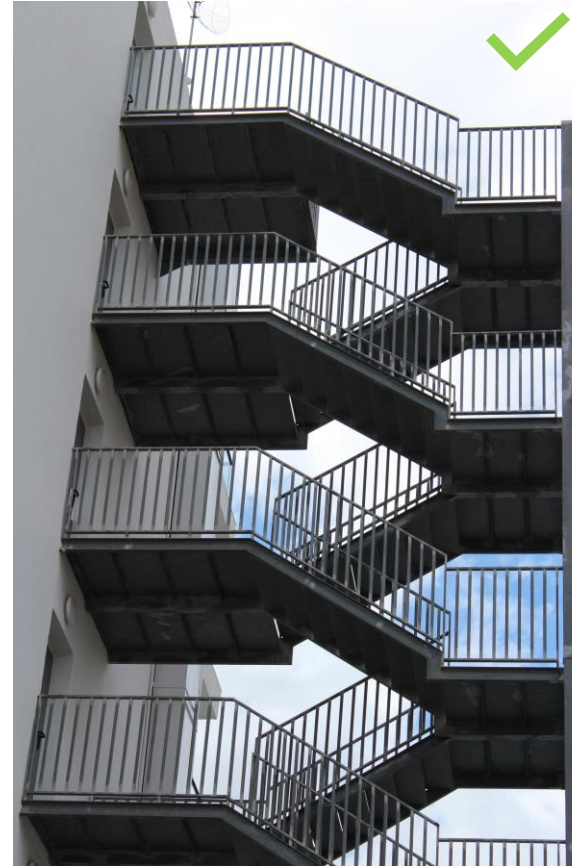
- In case of an emergency, especially in relation to smoke and fire, it is imperative to have protected means of escape from a building.
“**Protected**” in this case means a stairway that leads to a final exit to a place of safety and that is adequately enclosed with fire resisting construction.
- The building type will determine what kind and how many escapes are required.
 - **Building type 1:** Single dwellings with the main use as a single-family accommodation unit. These are normally single storey small buildings; Sometimes buildings can be more than one story.
 - **Building type 2:** Three stories and below (ground floor and no more than two floors above) with **totally open to the outside air corridors**.
 - **Building type 3:** Three stories and below (ground floor and no more than two floors above) with **enclosed corridors**. All or a substantial portion of the corridors are enclosed and not open to the outside air.
 - **Building type 4:** Four stories and below (ground floor and three more floors above) with **totally open to the outside air corridors**.
 - **Building type 5:** Four stories and below (ground floor and three more floors above) with **enclosed corridors**. All or a substantial portion of the corridors are enclosed and not open to the outside air.
- Generally, **at least 2 separate protected stairways** are required **for Type 3, 4 and 5** buildings.
- Enclosed stairways should be ‘protected’ on each level by self-closing, fire resisting doors.
- Stairways designated as means of escape should discharge to open air at ground level.



Stairways

Protected Stairways

Examples of Protected and Non-protected Stairways



Stairways

Further requirements

- Stairways should always be free of furniture or other materials
- Stairways that serve as a means of escape, be it main stairways or special escape stairways, should be at least 80cm wide
- Handrails should be provided alongside the stairway. They are required at least on one side of the stairway; If the stairway is more than 120cm wide, they are to be provided on both sides of the stairway.
- The handrails must be designed in such a way that they can be easily grasped by a hand and allow safe descent of the stairs.
- Emergency lighting is required along the stairway to lead people safely out of a building in the darkness, in case of a power failure and when smoke develops.
- This emergency lighting should function independently of the general power circuit in order to guide people safely out of a building in the event of a power failure.



The solid wall does not allow people to hold onto it with their hand, as it cannot be enclosed with fingers.

Contact

For further information contact the Safety & Risk Accommodation Team

groupsafety-accommodationaudits@tui.com

